



TOURISM (337)

CHAPTERWISE NOTES



TOURISM

Sl. No.	Module	Chapters (Public Examination)	Marks
1	Module 1 : Basics of Tourism	L-3: Impact of Tourism L-4: Fundamentals of Travel and Tourism Geography L-5: Transport for Tourism	20
2	Module 3 : Natural Diversity as Tourist Attraction	L-13: Growth and Patterns of Tourism in India L-14: Growth and Patterns of Tourism in World	18

Component	Details	Marks
Public Exam (Selected Modules 1,3)	Total Chapters : 5	38
Practical Exam	NA	00
TMA	Tutor Marked Assignment	20
Final Possible Marks		58 Marks

Table of content

1	Impact of Tourism
2	Fundamentals of Travel and Tourism Geography
3	Transport for Tourism
4	Growth and Patterns of Tourism in India
5	Growth and Patterns of Tourism in World

Economic Impacts

Economic impacts mean the effect of tourism on **employment, income and economic development**.

Tourism provides employment in many sectors:

- **Transport**
- **Hotels**
- **Restaurants**
- **Entertainment**
- **Guides**

Positive Economic Impacts of Tourism

- Tourism increases employment opportunities.
- The income of local people increases.
- Foreign exchange is earned.
- Hotels, transport and other services develop.
- Investment opportunities increase.
- Local industries and handicrafts are promoted.

Negative Economic Impacts of Tourism

- Tourism may increase prices.
- Living becomes expensive for local people.
- Sometimes foreign companies take more profit.
- Tourism may increase economic inequality in some areas.

Socio-Cultural Impacts

Socio-cultural impacts mean the changes occurring in the culture, traditions, lifestyle and behaviour of society due to tourism.



Negative Socio-Cultural Impacts

- Changes in traditional culture and values.
- Impact on the local lifestyle.
- Increase in crime and immoral activities.
- Commercialisation of culture.
- Erosion of culture in the local society.

Positive Socio-Cultural Impacts

- Mutual understanding increases among different cultures.
- Culture and traditions are preserved.
- Cultural exchange increases.
- Local art and handicrafts are promoted.

Political Impacts

Political impacts mean the effect of tourism on government policies, international relations and administration.

Positive Political Impacts

- Friendship and cooperation among countries increase.
- The government makes new policies for the development of tourism.
- Security and basic facilities develop.
- International relations become stronger.

Negative Political Impacts

- Tourism is affected by political instability.
- Tourists avoid visiting due to security problems.
- Terrorism and conflict harm the tourism industry.



Environmental Impacts

Tourism also affects the environment. Tourism increases the use of natural resources and both positive and negative impacts may occur on the environment.

Negative Environmental Impacts

- Pollution (air, water, noise) may increase.
- Natural resources are used more.
- Wildlife and natural habitats are affected.
- Waste and crowd cause damage to the environment.

Positive Environmental Impacts

- Tourism increases awareness of environmental protection.
- National parks and sanctuaries are protected.
- Government and society make efforts for environmental protection.
- Natural sites are conserved and developed.

Tackling the Negative Impacts

- It is necessary to maintain balance in tourism development.
- The government should promote sustainable tourism.
- Participation of local communities is necessary.
- Special attention should be given to environmental protection and cultural conservation.

TOP 5 QUESTIONS

Question-1. How many types of impacts of tourism are there?

Answer- Tourism has four main impacts economic, socio-cultural, political and environmental. These impacts affect the development, culture, society and environment of a country or region both positively and negatively.



Question-2. Write the positive economic impacts of tourism.

Answer- Tourism increases employment opportunities, local industries develop, foreign exchange is earned and hotels, transport and other services expand. This increases regional development and economic activities.

Question-3. What are the socio-cultural impacts of tourism?

Answer- Tourism increases contact between different cultures, which increases cultural exchange and understanding. At the same time local art, traditions and handicrafts are promoted, but sometimes traditional lifestyle may also be negatively affected.

Question-4. What are the negative environmental impacts of tourism?

Answer- Due to tourism pollution may increase, natural resources are used more and wildlife may be affected. Waste, crowd and unplanned development cause damage to the environment.

Question-5. How can negative tourism impacts be tackled?

Answer- To reduce negative impacts, sustainable tourism should be promoted, attention should be given to environmental protection, participation of the local community should be ensured and tourism development should be controlled in a balanced manner.



2

Fundamentals of Travel and Tourism Geography

Introduction

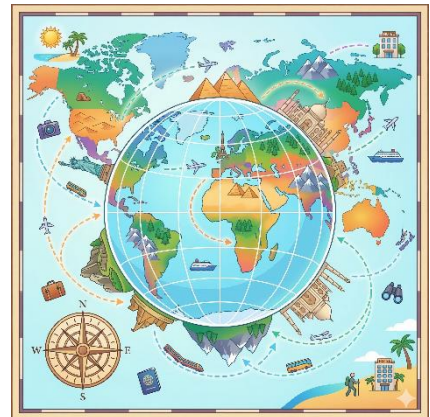
Travel and tourism have a deep relation with geography. To reach a place, calculate time, understand distance and know the route, knowledge of the elements of geography is necessary. Latitude, longitude, time zones and maps play an important role in planning tourism.

SIGNIFICANCE OF GEOGRAPHY IN ENHANCING TRAVEL AND TOURISM

Geography is the study of the earth and its various places. For tourism it is necessary to know **the location, distance and direction of a place.**

From geography a tourist gets the following information :

- Location and distance of a place.
- Geographical relationship between different places.
- Time difference and travel planning.
- Ability to read maps and charts.
- Identification of different tourist places.



Location on the Globe/Map

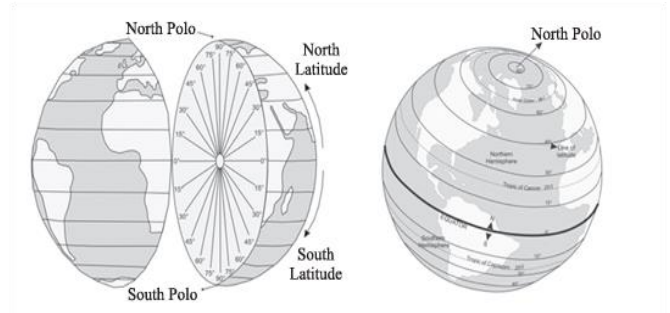
- The earth is represented in the form of a globe.
- The position of any place on the globe is determined by latitude and longitude.
- These lines are imaginary lines on the earth.



Latitude

Latitudes are imaginary lines drawn on the earth in east-west direction and indicate the north or south position of a place.

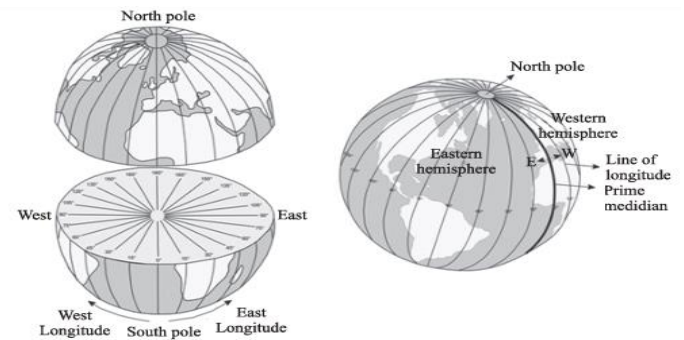
- Latitude lines are parallel to the equator.
- The value of the equator is 0°.
- Latitudes range from 0° to 90° north and south.
- All latitude lines are parallel.



Longitude

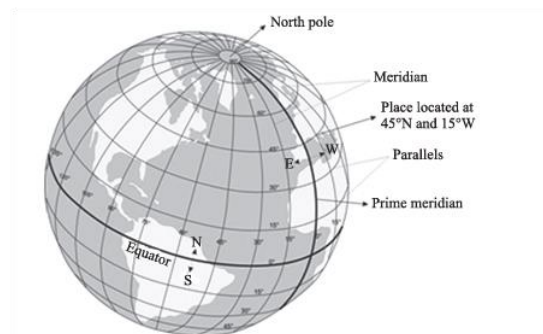
Longitudes are imaginary lines drawn on the earth in north-south direction and indicate the east or west position of a place.

- The main longitude line is the Greenwich Meridian.
- Its value is 0°.
- Longitudes range from 0° to 180° east and west.



Rotation of the Earth

- The earth rotates once on its axis in 24 hours.
- The earth rotates 360°.
- Therefore every 15° longitude = 1 hour time difference.
- Day and night occur due to the rotation of the earth.



International Date Line

The International Date Line is the imaginary line where the date changes.

- This line is located approximately at 180° longitude.
- Crossing it results in one day ahead or behind.



- It is used for determining date and time in the world.

Determining Time on the Globe

- Time is different at different places on the earth.
- Countries adopt standard time for determining time.
- The standard time of India is determined from 82°30' east longitude.
- It is called Indian Standard Time (IST).

Method of Calculating Time

- Every 1° longitude = 4 minutes time difference.
- Every 15° longitude = 1 hour.
- If a place is in the east, time increases.
- If it is in the west, time decreases.

Communicating through Maps and Charts

- A map is the pictorial representation of the earth or any part of it.
- Maps provide information about the location, distance and direction of a place.
- Maps are very useful in planning tourism.

Types of Maps

- **General reference map**
- **Special or thematic map**

General Reference Map

These maps show general information such as countries, states, cities and rivers. They are used to understand the general location of a place.

Special or Thematic Map

These maps provide information about a particular subject.



For example:

- **Climate**
- **Industries**
- **Agriculture**
- **Population**

Use of Maps

- Maps show distance and direction.
- They help in understanding travel routes and location of places.
- Tourists obtain information about tourist places from maps.

Types of Charts

- **Bar chart**
- **Line chart**
- **Pie chart**

Use of Charts:

- To present data in a simple and clear manner.
- To understand statistical information related to tourism.



TOP 5 QUESTIONS

Question-1. What is latitude?

Answer- Latitudes are imaginary lines drawn on the earth in east-west direction and indicate the north or south position of a place, the equator is 0° latitude.

Question-2. What is longitude?

Answer- Longitudes are imaginary lines drawn in north-south direction. They indicate the east or west position of a place, the Greenwich Meridian is 0° longitude.

Question-3. What is the International Date Line?

Answer- The International Date Line is an imaginary line located approximately at 180° longitude. Crossing it results in one day ahead or behind. It is used for determining the date in the world.

Question-4. What is Indian Standard Time?

Answer- Indian Standard Time (IST) is determined on the basis of $82^{\circ}30'$ east longitude. It is the standard time adopted to maintain uniformity of time throughout India.

Question-5. What is the importance of a map?

Answer- A map is the pictorial representation of the earth or any part of it. It provides information about the location, distance and direction of places and helps in planning travel and tourism.



3

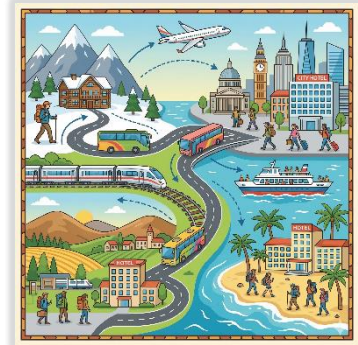
Transport for Tourism

Introduction

Transport is an important part of the tourism industry. For the development of tourism, means are required to carry travellers from one place to another. Road, rail, air and water transport play an important role in increasing tourism activities.

Linkages between Transport and Tourism

- Tourism and transport have a close relationship.
- Development of tourism is not possible without transport.
- It is necessary for tourism that tourists can reach the destination easily.
- Good transport increases the accessibility of tourist places.
- Transport also promotes economic and social development.

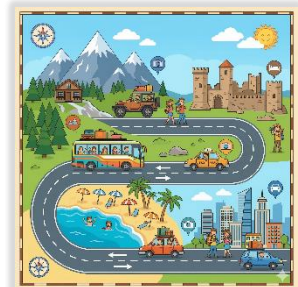


Characteristics of Tourist Transportation

Tourist transportation is the means of carrying tourists to the destination. It reduces **time and distance** and tourism activities increase through transport. Safe and convenient transport is necessary for tourism development.

Characteristics of Road Transportation

1. Road transport connects different places and people with each other.
2. Its main advantages are **flexibility, reliability, speed, low cost**.
3. It is capable of taking tourists to the final destination place.
4. National and state roads have an important place in the development of good road routes.
5. Better condition of roads increases travel and tourism.



6. Vehicles such as car, taxi, coach, bus and jeep are used in road transport.
7. It also connects rail, air and water transport with each other.

Characteristics of Rail Transportation

1. Rail transport is the most suitable and cheap means for long distance travel.
2. It is important for business, education, tourism and pilgrimage.
3. Rail routes connect almost all parts of the country.
4. Many facilities are available in trains such as **sleeper, air-conditioned coach, food facilities**
5. In modern rail services internet and other facilities are also available.
6. This has increased travel and tourism sector.



Characteristics of Water Transportation

1. In earlier times **water transport** was the main means of travel.
2. The quality of boats and ships has continuously improved.
3. The main means of water transport are **lakes, rivers, canals, dams, sea.**
4. Water transport benefits both **tourism and trade.**



Characteristics of Air Transportation

1. After road, air travel is the most popular means of transport.
2. It is the fastest means of transport.
3. Thousands of kilometers of distance can be covered in just a few hours.
4. Air transport has connected the whole world with each other.
5. It helps in reaching mountains, forests, deserts and inaccessible areas.
6. Its main characteristics are **high speed, saving of time, comfortable travel.**



Means of Transport in Tourism

The main means of transport in tourism are **road transport, rail transport, air transport, water transport.**

(i) Road Transport

- Road transport is the most common means of transport.
- It connects cities, villages and tourist places.
- Tourists can travel in a flexible and convenient way through road routes.

(A) Highways

- **Highways** are major road routes.
- They connect **main cities and states.**
- **National highways** play an important role in India.

(B) Major Highways

- There are many **important national highways** in India.
- They **connect major cities** of the country with each other.
- They promote **tourism and trade.**

(C) Roads

- Roads are the main means of local transport.
- They connect villages and cities.
- Roads are very important for reaching tourist places.

(ii) Rail Transport

- Rail transport is important for long distance travel.
- It is a **cheap and convenient** means of transport.
- Railway network in India is **very extensive.**



- Many tourist places can be easily reached by rail.

(A) **Luxury Trains**

- Some special trains are **operated for tourists**.
- **High level facilities** are available in these trains.
- They provide special tourism experience to tourists.

(iii) **Air Transport**

- Air transport is the fastest means of transport.
- It is used for long distance travel.
- Air transport has greater importance in international tourism.
- It takes tourists to the destination in less time.

(iv) **Water Transport**

- Water transport is used for travel through sea and rivers.
- Its main types are coastal **water travel, inland waterways, sea transport**.
- Water transport benefits both trade and tourism.

Transport to Promote Tourist

To increase tourism, improvement in transport system is necessary:

- Tourists should receive clear and correct information.
- Ticket booking and reservation facility should be available.
- Transport services should be safe and reliable.
- Comfortable travel facilities should be available for tourists.
- There should be convenience and quality in the transport system.



TOP 5 QUESTIONS

Question-1. What is transport?

Answer- Transport is the system through which people and goods are carried from one place to another. It plays an important role in the development of trade, communication and tourism.

Question-2. What is the relationship between tourism and transport?

Answer- Tourism and transport have a close relationship. Without transport tourists cannot reach any place. Good transport system increases accessibility of tourist places and the tourism industry develops.

Question-3. What are the main means of transport in tourism?

Answer- The main means of transport in tourism are four road transport, rail transport, air transport and water transport. All of them play an important role in carrying tourists from one place to another.

Question-4. What is the importance of air transport?

Answer- Air transport is the fastest means of transport. It is useful for long distance travel and plays an important role in international tourism because it helps in reaching the destination in less time.

Question-5. Why is transport important for tourism development?

Answer- Transport helps tourists to reach tourist places. Good transport system makes travel easy and fast, due to which tourism activities increase and economic development is also promoted.



4

Growth and Patterns of Tourism in India

Introduction

The history of travel and tourism in India is very old. The tourism industry plays an important role in the country's economy, employment, and cultural exchange. India's natural beauty, cultural heritage, and diverse tourist destinations attract tourists from both within the country and abroad.

Tourist

A **tourist** is a person who travels outside his or her place of residence for **at least 24 hours** and stays there temporarily.

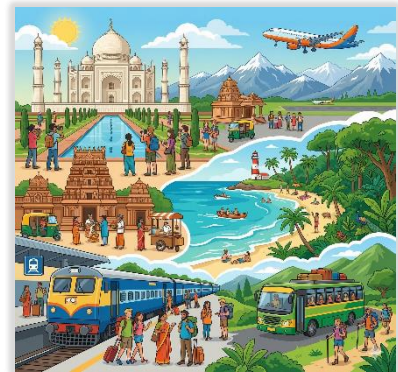
Types of Tourists

1. Domestic Tourist

- Travels Within his or her own country
- Stays at a place for at least **24 hours**.

2. International Tourist

- Travels to another country outside his or her own country.
- Travels for purposes such as tourism, business, education, health, etc.



Attractions for Tourists

Main attractions of tourism in India include:

- Natural attractions
- Cultural heritage
- Historical monuments
- Wildlife and national parks



- Mountains, beaches, and rivers
- Religious places

Examples of Natural Tourism

- Mountain tourism
- Coastal tourism
- Wildlife tourism

Examples of Cultural Tourism

- Religious tourism
- Historical tourism
- Health tourism
- Rural tourism

Development of Tourism

- The development of tourism is connected with the development of transport and communication.
- Tourism increases economic growth and employment.
- In India, tourism grew rapidly after independence.
- The government introduced many plans and policies for tourism development.

Factors Affecting Tourism

- 1. Geographical Location :** Geographical conditions affect the arrival of tourists. Climate, natural beauty, mountains, beaches, and the environment attract tourists. The number of tourists also changes according to the season. For example, in summer people travel to cool mountain regions.
- 2. Cultural Traditions :** Cultural programs such as fairs, festivals, dances, religious ceremonies, and local traditions attract tourists. Festivals and cultural events in different states of India attract tourists from India and abroad. This promotes both tourism and local culture.
- 3. Safety and Security :** Safety and security greatly influence tourist arrivals. If a place has good security arrangements, tourists show more interest in visiting it. On the other hand, insecurity or accidents can reduce tourism.



4. Economic Condition : The economic condition of people also affects tourism. People with higher income can spend more on travel and tourism. Therefore, people with higher income travel more than those with lower income.

5. Behavior of Local People : Good facilities and services are very important for tourism development. These include hotels, accommodation, transport, banking, communication, booking, and guide services. Better facilities attract tourists and encourage them to travel.

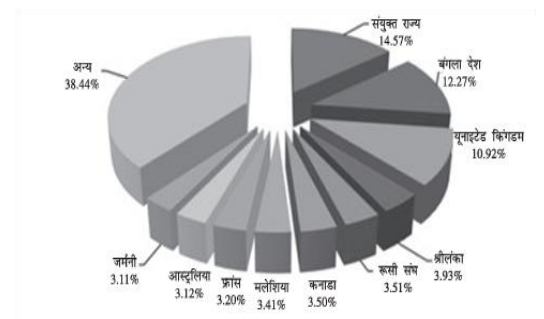
6. Government Policies : Government policies also play an important role in tourism development. The government takes steps such as visa policies, tourism schemes, promotional programs, and infrastructure development to promote tourism. Good policies help in attracting more tourists.

Arrival of Foreign Tourists

- The number of foreign tourists visiting India has gradually increased.
- In **1951**, the number of foreign tourists visiting India was very low.
- In later years, the number increased due to tourism development.
- Tourism increases **foreign exchange earnings**.

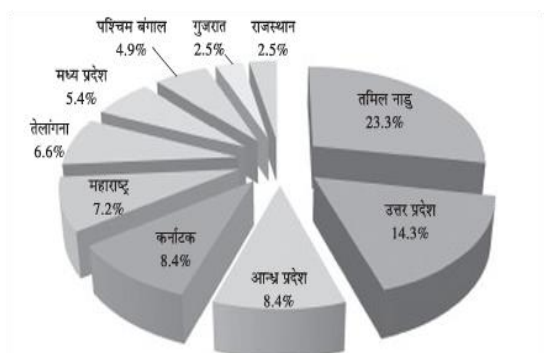
Pattern of Foreign Tourist Arrivals

- Foreign tourists in India mainly come from **America and Europe**.
- Some major countries include **USA, United Kingdom, Germany, France, and Australia**.
- In **2014**, the number of foreign tourists visiting India increased significantly.



Growth of Domestic Tourism

- Domestic tourism in India is increasing rapidly.
- Main reasons for domestic tourism:
 - Religious travel
 - Cultural tourism
 - Holiday tourism



From **1997 to 2015**, the number of domestic tourists increased continuously.

Income from Tourism

- Tourism generates **foreign exchange income**.
- The tourism industry strengthens the **country's economy**.
- Tourism increases **employment opportunities**.

Government Efforts to Promote Tourism

The Government of India has taken several steps for tourism development :

- Establishment of the **Ministry of Tourism**
- **National Tourism Policy**
- Tourism promotion programs
- Development of tourism infrastructure
- International tourism promotion campaigns

TOP 5 QUESTIONS

Q1. Who is called a tourist?

Ans - : A tourist is a person who travels outside his or her place of residence for at least **24 hours** and stays there temporarily. The purpose of the visit may be tourism, business, education, or other activities.

Q2. Write the difference between domestic and international tourists.

Ans - A domestic tourist travels within his or her own country. An international tourist travels to another country outside his or her own country. Both types of tourists stay at a place for at least 24 hours.

Q3. What are the main attractions of tourism in India?

Ans - The main attractions of tourism in India are natural beauty, historical monuments, religious places, cultural heritage, wildlife, mountains, beaches, and national parks. These attractions draw tourists from both India and abroad.



Q4. What are the factors affecting tourism?

Ans - The main factors affecting tourism are geographical location, cultural traditions, safety and security, economic condition, behavior of local people, and government policies.

Q5. What are the benefits of tourism for a country?

Ans - Tourism brings foreign exchange earnings, increases employment opportunities, and strengthens the country's economy. It also promotes cultural exchange and better international relations.



5

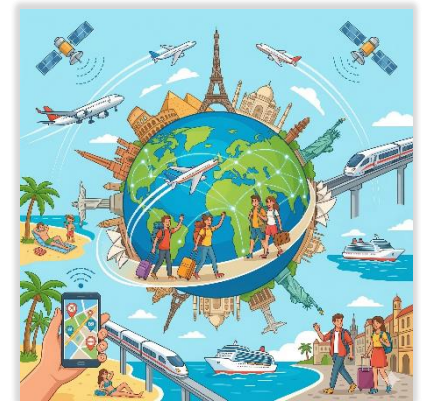
Growth and Patterns of Tourism in World

Introduction

The history of travel and tourism in India is very old. The tourism industry plays an important role in the country's economy, employment, and cultural exchange. India's natural beauty, cultural heritage, and diverse tourist destinations attract tourists from both within the country and abroad.

Factors Affecting Tourism in the World

- Increasing income of tourists
- More leisure time
- Travel expenses
- Technological development
- Communication and information media
- Improvement in the standard of living in developed countries
- Development of transportation facilities



Different Tourist Attractions in Various Parts of the World

Cultural Attractions

- Cultural heritage, museums, monuments, and religious places attract tourists.
- Traditions and culture of different countries are major attractions for tourism.

Natural Attractions

- Natural places such as mountains, beaches, lakes, and forests attract tourists.
- Natural environment and beautiful scenery are important attractions for tourism.

Attractions Due to Events

- Various festivals, cultural programs, and sports events attract tourists.
- International events promote tourism activities.



Entertainment Attractions

- Entertainment places and leisure activities are major attractions for tourism.
- Tourists choose these places for entertainment and relaxation.

Other Attractions

- Amusement parks, museums, and exhibition centers also play an important role in tourism development.

Spatial Distribution of Travel and Tourism

- Tourism is unevenly distributed in different regions of the world.
- Tourism activities are higher in developed countries.
- Tourism is mainly concentrated in **Europe, America, and Asia**.

Top Ten Tourist Destinations in the World

Major tourist destinations of the world include France, United States of America, Spain, Italy, United Kingdom, China, Mexico, Germany, Thailand, and Turkey.

Growth of Tourism in the World

- After **1950**, tourism increased rapidly across the world.
- Globalization and technological development promoted tourism.
- Improvements in transportation facilities increased tourism activities.

Tourist Arrivals in the World

- The number of international tourists is continuously increasing.
- The level of tourism differs from country to country.
- Tourism benefits the global economy.

Tourism Arrivals and Earnings

- Tourism provides **foreign exchange income** to countries.
- The tourism industry generates employment and economic growth.
- International tourism strengthens the economic condition of countries.

Future Possibilities of World Tourism

- The future possibilities of tourism are very high.



- Technological development and better transportation will promote tourism.
- Many new tourist destinations are being developed.

TOP 5 QUESTIONS

Q1. What are the factors affecting world tourism?

Ans - The main factors affecting world tourism are tourists' income, more leisure time, travel expenses, technological development, expansion of communication media, and development of transportation facilities. All these factors play an important role in increasing tourism activities.

Q2. What are natural attractions?

Ans - Natural attractions are natural places that attract tourists because of their beauty. These include mountains, lakes, beaches, forests, and natural scenery.

Q-3. What are cultural attractions?

Ans - Cultural attractions are related to a country's traditions, history, monuments, and religious places. They show the culture and heritage of a region and attract tourists.

Q-4. What are the reasons for the growth of tourism in the world?

Ans - Tourism in the world has increased due to development of transport and communication, technological progress, increasing income of people, and more leisure time.

Q-5. What are the benefits of tourism for countries?

Ans - Tourism provides foreign exchange earnings, increases employment opportunities, and promotes economic development. It also increases cultural exchange between countries.

